



2009 COBA Tour of Homes™ Entry for Sale in Northwest Crossing



JUST LISTED:
Built with Tradition
**NEW FLOOR PLAN LOADED
WITH DESIGNER FEATURES**

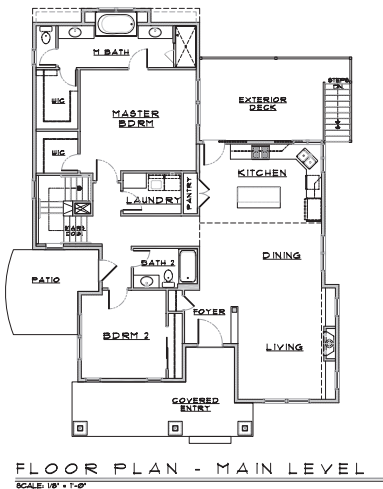
Currently under construction and due for completion in July, this inviting Triad Home is close to parks, schools and amenities. With lovely territorial views from the deck and lots of extra features, this home will be featured during the COBA Tour of Homes™, July 17 - 19 & 24 - 26.

- Main level living
- 2,100+ sq. ft.
- 3 Bedroom
- Lot #311
- 2 Baths
- Address:
2460 NW Sacagawea
Bend, OR 97701
- Close to schools
& parks
- Price: \$379,900
- 3 Outdoor living spaces

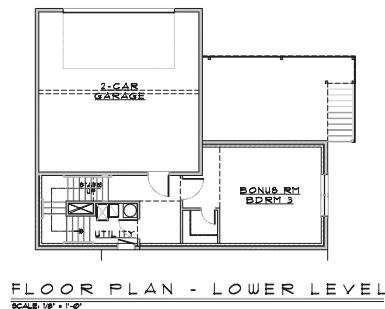
• Featuring Earth Advantage
& Energy Star certifications



- Vaulted ceilings and use of natural light
- Three outdoor living spaces: front porch, side patio and large deck with territorial views
- Great room with gas fireplace & custom built-ins
- Dining area open to kitchen and great room for easy entertaining
- Kitchen includes custom cabinets, center island/breakfast bar, pantry & all Stainless Steel appliances
- Large, luxurious master suite with two walk-in closets, soaking tub, double sinks & oversized tile shower
- Additional private bedroom/bonus room located downstairs
- Hardwood floors
- Loads of storage available
- Classic Craftsman trim and built-in niches throughout interior
- Air conditioning & natural gas, forced air furnace
- Fully landscaped & irrigated
- Oversized two-car garage on rear alleyway
- Schools: High Lakes Elem. Cascade Middle & Summit High



*Enlarged floor plan
shown on reverse.*



For more information, call 541.728.0033

Marketed by:
Taft Dire LLC
1537 NE 4th Street
Bend, Oregon 97701
www.taftdire.com
All brokers are licensed in Oregon



Directions:

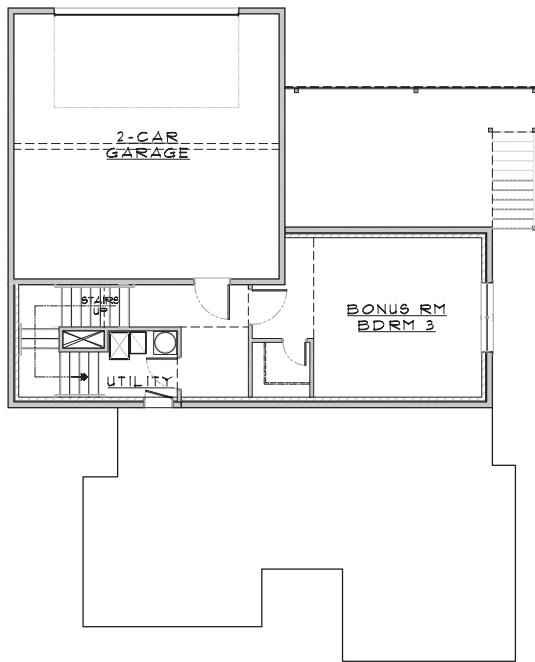
From downtown Bend, head west on NW Newport which turns into NW Shevlin Park Rd. Turn left on NW Silas Place and then turn right on NW Sacagawea.

Triad Homes/Design Tech Studio Copyright 2009. All prices, areas, dimensions and features stated or implied are approximate, may vary and are subject to change without notice. 05/21/09



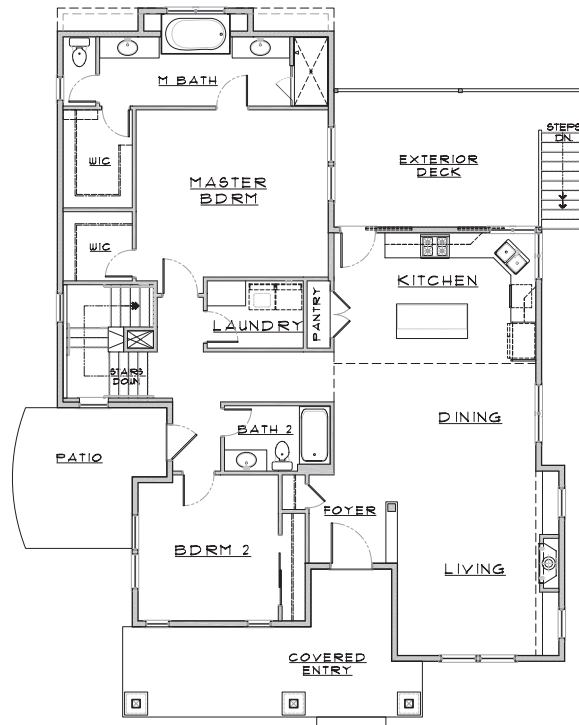


2009 COBA Tour of Homes™ Entry for Sale in Northwest Crossing



FLOOR PLAN - LOWER LEVEL

SCALE: 1/8" = 1'-0"



FLOOR PLAN - MAIN LEVEL

SCALE: 1/8" = 1'-0"

For more information, call 541.728.0033

Marketed by:
Taft Dire LLC
1537 NE 4th Street
Bend, Oregon 97701
www.taftdire.com
All brokers are licensed in Oregon



- Main level living
- 3 Bedroom
- 2 Baths
- Close to schools & parks
- 3 Outdoor living spaces
- 2,100+ sq. ft.
- Lot #311
- Address: 2460 NW Sacagawea Bend, OR 97701
- Price: \$379,900

Triad Homes/Design Tech Studio Copyright 2009. All prices, areas, dimensions and features stated or implied are approximate, may vary and are subject to change without notice. 05/21/09

